

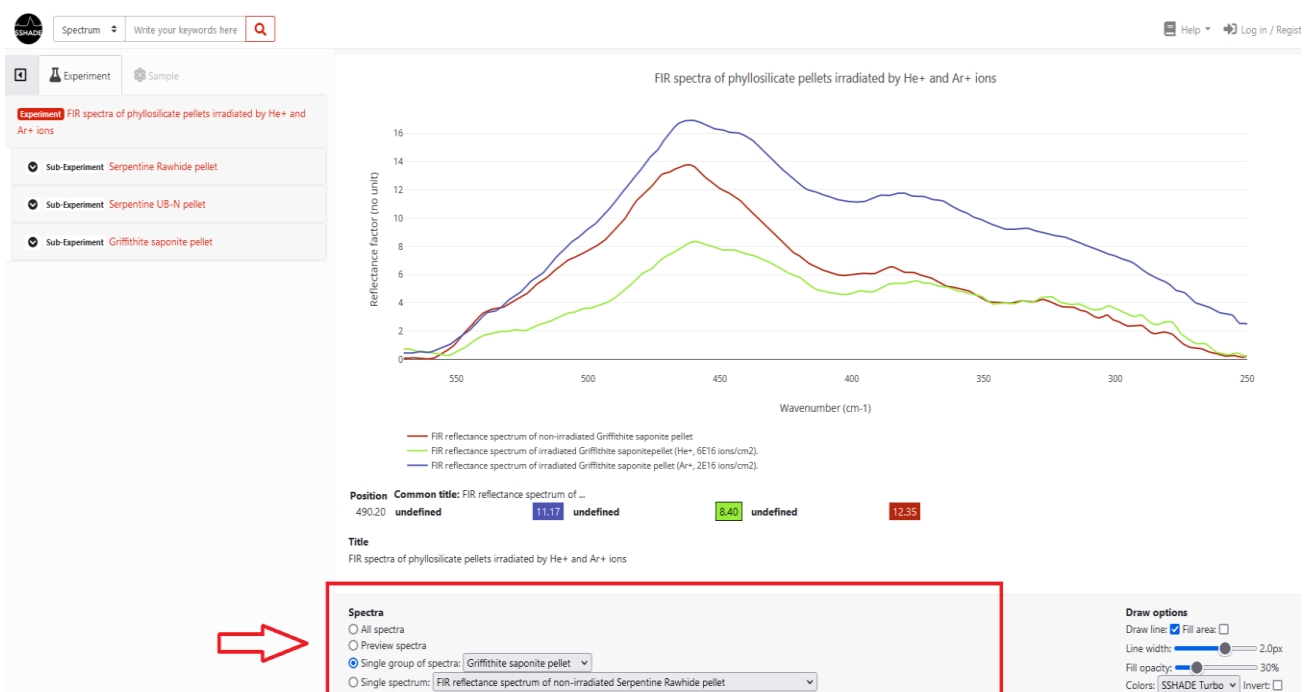
SSHADE Users Newsletter – Mai 2024 –

Tips on the dynamic visualization tool

Dear SSHADE users,

In this edition of our newsletter, we'll explore some tips for effectively using our dynamic spectral visualization tool. One of the main advantages of our tool is its intuitive navigation. When you click on any spectrum present in an experiment, you instantly access the visualization tool loaded with the preview spectra. No need to juggle between multiple windows or tabs, everything is done in just one click!

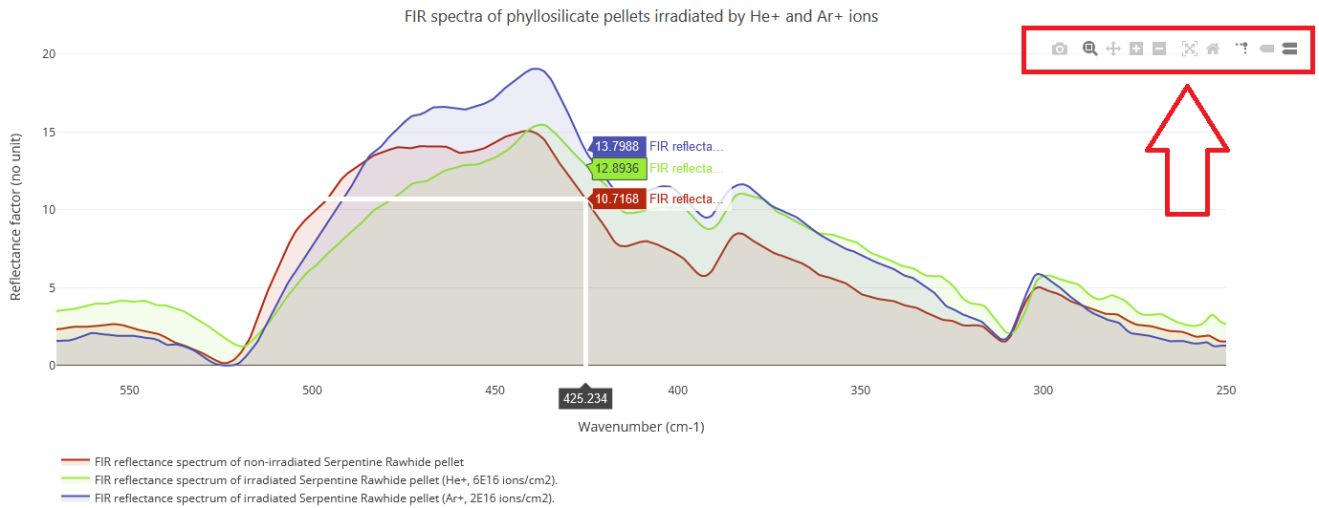
- You can then opt to visualize all the spectra from an experiment, view the spectra from a subgroup, or conversely, focus on a single spectrum.
- In the two first cases you can activate/deactivate a spectrum by clicking on its caption.



At the top right of the spectra, there's a series of tools.

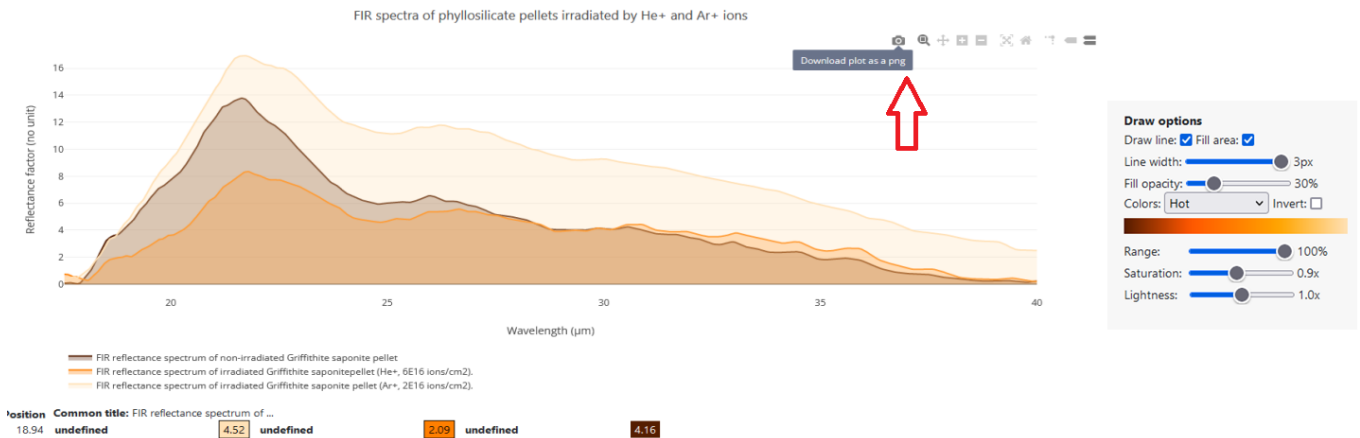
- To examine a specific portion of a spectrum more closely, do not forget to use the zoom & pan functions.
- The 'Autoscale' option resizes the graph over the entire spectral range, while the 'Reset axes' option resets it to the validated spectral range only.
- The 'Toggle spike lines' tool lets you add vertical and horizontal lines to help you locate your cursor on the spectrum.
- You can also choose the option “show closest data on hover” to visualize the x/y values of a peculiar spectrum as you move your mouse along the spectrum.
- On the opposite, you can also choose the option “compare data on hover” to be able to directly visualize the y values for one x position for up to 3 different spectra.

An example of this tool is shown below. All these features are particularly useful for identifying peaks or important trends in the data.



Position Common title: FIR reflectance spectrum of ...
 425.31 undefined 13.80 undefined 12.89 undefined 10.72

- If the original spectral unit of the spectrum is not the one you usually work with, you can switch to various wavenumber, wavelength, energy, or frequency units.
- You can also invert the x axis to get decreasing values, of wavenumber for example.
- Another option proposed is to switch between linear and logarithm scales for both x and y-axis.
- Finally, do not hesitate to play with the draw options to improve the rendering of your plot.
- Once you have obtained the best result, you can directly download the plot as a PNG by clicking on the small camera.



Position Common title: FIR reflectance spectrum of ...
 18.94 undefined 4.52 undefined 2.09 undefined 4.16

A new plot tool is in preparation: to allow you to compare spectra from various experiments, bandlists, but also with your own data !

Have fun with SSHADE data and stay tuned for future data and tools.

The SSHADE Team

All previous user newsletters are stored in the dedicated ['News' page](#) of the [SSHADE Wiki](#)

You are receiving this SSHADE User Newsletter because you are a registered user of SSHADE (www.sshade.eu). If you do not wish to receive them, please send an e-mail to our contact address (contact@ssshade.eu) with the subject 'unsubscribe User Newsletter'.