

SSHAE Users Newsletter - 2021-03

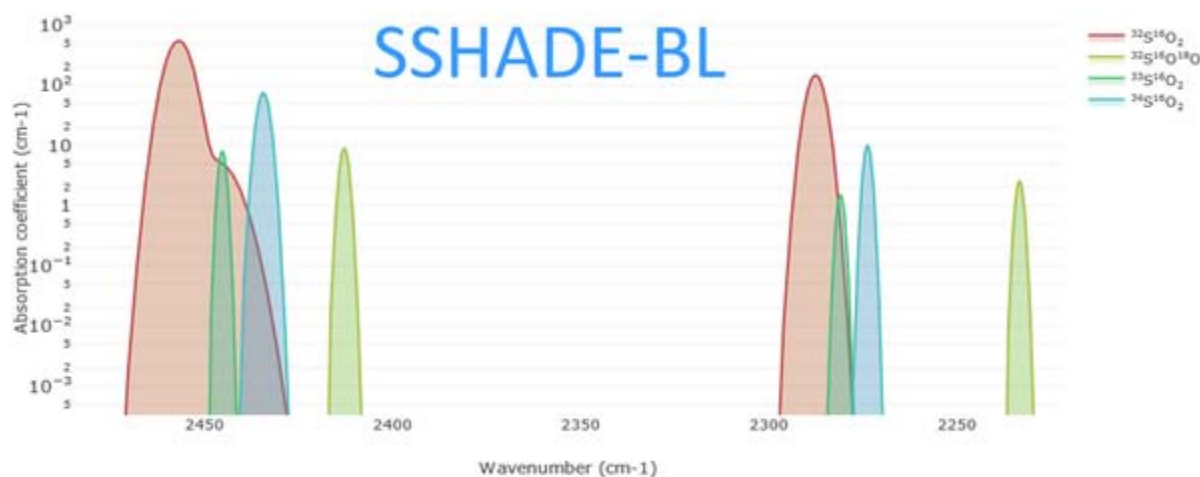
Dear SSHAE users,

In this **3rd SSHAE Users Newsletters** we inform on the **SSHAE poster at EPSC-2021** on the new band list database. We then present a new section on the SSHAE wiki that lists most of **the other databases on solids** and we list all the **new data made publicly available in SSHAE during the last 3 months**.

* SSHAE poster @ EPSC 2021

In the session "Tools, Data Analytics and Geomapping for Solar and Planetary Sciences" of the Europlanet Science Congress 2021 you can find a **poster describing the future 'band list' database in SSHAE** that will be open online on 1st of October (prototype).

- If you cannot access the EPSC site you will find it also [HERE](#) on the SSHAE Wiki.



=> The next Users Newsletter will present in more detail this new band list database.

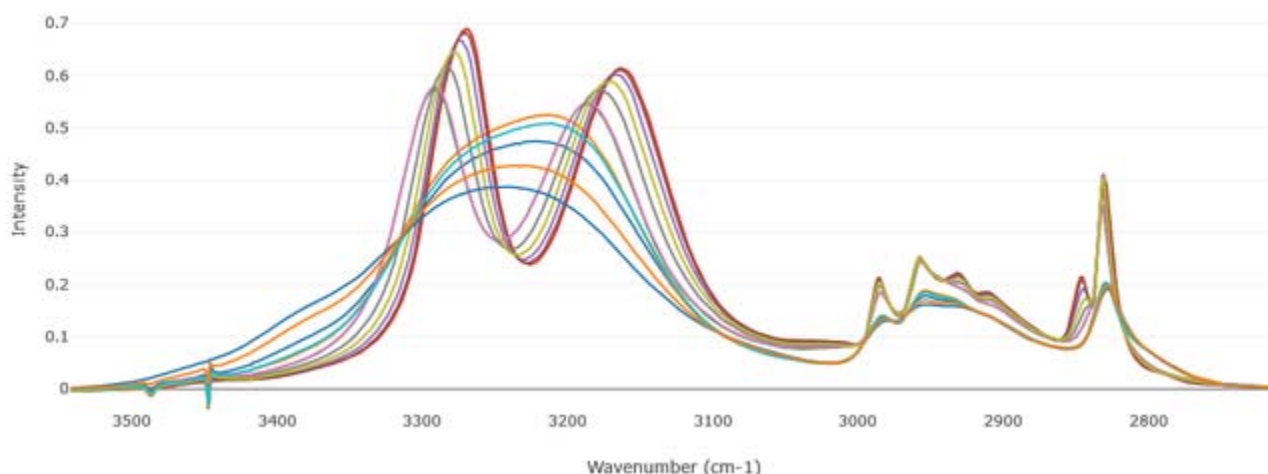
* New list of other databases on solids

- In the SSHAE Wiki we have recently added a new section that starts to list most of [the other databases on solids](#) (transmission, reflectance, Raman, ... of ices, minerals, ...) available on the web.
 - For each database we provide a short description, different information on the content of the database (types of samples and spectra, data format, metadata, ...) as well as a direct link to the search page of the database.

- If you see an useful database missing in this list did not hesitate to provide us (contact@sshade.eu) with its url.

* New SSHAE data

- **since 1st June 2021: 221 new spectra**



- [Mid-IR absorbance spectra of amorphous and crystalline CH₃OH ice between 17 and 120 K](#) [GhoSST]
- [NIR spectra of a series of opal \(-A and -CT\) in ambient conditions and at low temperature \(~ -35°C\) and/or low pressure \(~ 8 mbar\)](#) [GhoSST]
- [Mo K edge XAS transmission of NaMoO₄ reference for energy resolution optimisation](#) [FAME]
- [Pd K edge XAS fluorescence of 1 wt.% Pd/SiO₂ at RT under He or H₂ \(after heating at 300C under H₂\)](#) [FAME]
- [Bidirectional Vis-NIR reflectance spectra of two tholins samples \(+ mixtures with pyrrhotite\) at various illumination-observation geometries \(i=0°, 30°, 60° - e= -70° to 70°\) and their extracted single scattering albedo and optical constants spectra](#) [GhoSST]
- [Visible near infrared spectra of salt crusts in Andean Salars, Chile](#) [Mirabelle]

Contact

- If you have questions on SSHADe or if you want us to deal with a specific topic in this Newsletter then do not hesitate to use the SSHADe contact mail : contact@sshade.eu

Bernard Schmitt and the SSHADe team

- You receive this User Newsletter as you are a registered user of SSHADe (www.sshade.eu). If you do not want to receive them, please just send me a mail (bernard.schmitt@univ-grenoble-alpes.fr) with subject 'unsubscribe Newsletter'.

- All user newsletters are stored in the dedicated '[News](#)' page of the SSHADe Wiki

--

Bernard Schmitt

Directeur de Recherche CNRS
 Scientific manager of SSHADe database infrastructure
 Scientific manager of GhoSST@SSHADe database

bernard.schmitt@univ-grenoble-alpes.fr

*Institut de Planétologie et Astrophysique de Grenoble (IPAG)
Université Grenoble Alpes / CNRS*

Visit the [SSHADE \(www.sshade.eu\)](http://www.sshade.eu) solid spectroscopy database infrastructure !

Apply for an experiment at [CSS \(https://cold-spectro.sshade.eu/\)](https://cold-spectro.sshade.eu/), the Cold Surface Spectroscopy facility !